

Best Management Practices (BMPs) In-service Training

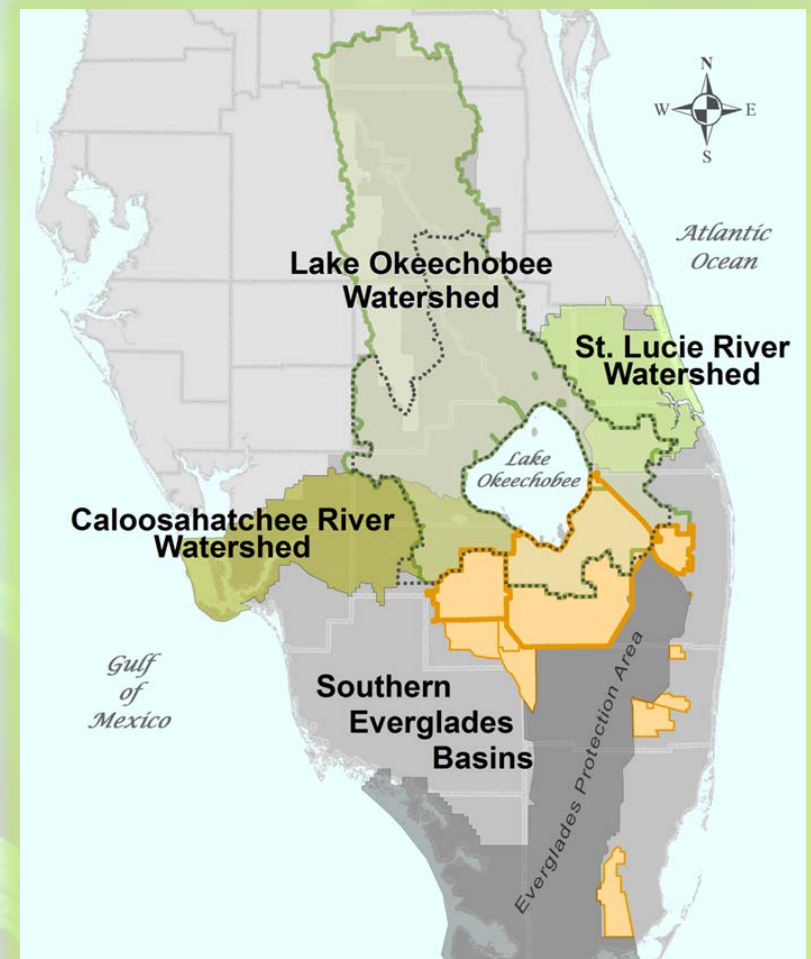
COLLABORATIVE APPROACHES FOR BMP IMPLEMENTATION

Pamela Wade, P.E., Bureau Chief, Everglades Regulation, SFWMD

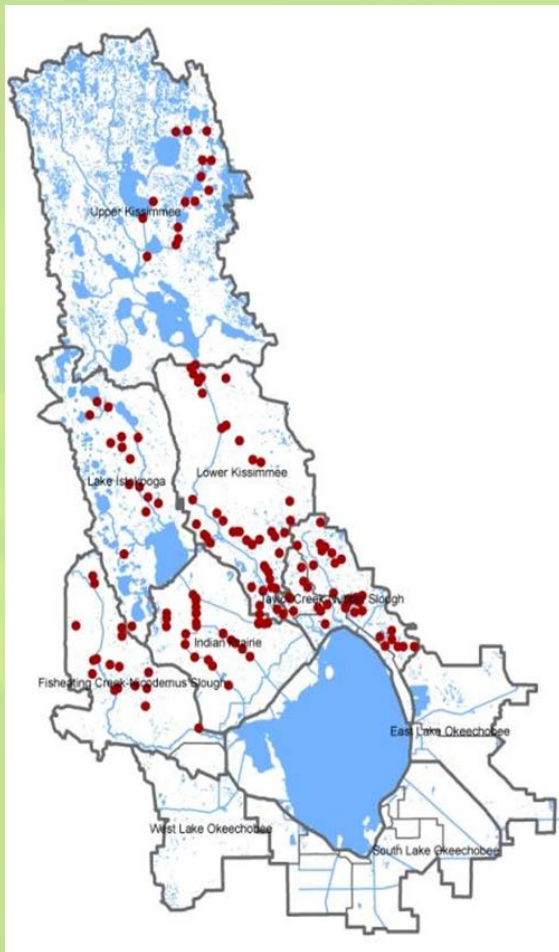


Regulatory Source Controls

- Legislative mandates
 - Everglades Forever Act
 - Northern Everglades and Estuaries Protection Program
- Rules 40E-63 and 40E-61 require BMPs via permits
- SFWMD monitors water quality to verify BMP effectiveness



Interagency Coordination



- Responsibilities are defined in the Interagency Agreement for the Northern Everglades Watersheds
- Ongoing interagency coordination to prioritize BMP efforts:
 - Consider SFWMD monitoring data and FDACS enrollment records
 - Verify enrollment/implementation
 - Fund Research & Demonstration

BMP Verification

- Field inspections and records review are essential for an effective BMP program.
- Lessons learned for grower acceptance/partnership:
 1. Clear understanding of the mandates and water quality objectives.
 2. Effective and fair process. Straightforward communication.
 3. Periodic visits and development of relationships.

Research and Demonstration

- UF-IFAS documents are used when verifying implementation of BMPs
- SFWMD may fund or approve BMP research:
 - C-139 Basin Vegetable Production Demonstration Project, through FDACS, Dr. Kelly Morgan
 - C-139 Basin Above-ground Impoundment Optimization, Dr. Sanjay Shukla
 - EAA-EPD BMP Research Permit , Dr. Samira Daroub



Summary

- SFWMD implements mandatory BMP Programs overlapping State-wide programs
- Statutes, rules, and interagency agreements define responsibilities to prevent duplication
- Agencies work closely to leverage resources and areas of expertise
- The collective and coordinated actions of all entities results in a more effective approach to achieving water quality goals

Questions or Comments?

